



BG300 Barrier Gate

Speed adjustable, high stability

The BG300 barrier is designed with a yellow chassis, and the shape is generous and beautiful. Using high-performance DC brushless motor, stable and reliable operation, long life; embedded core control system, with fast response speed, rich function expansion and other characteristics, it is a cost-effective car barrier.

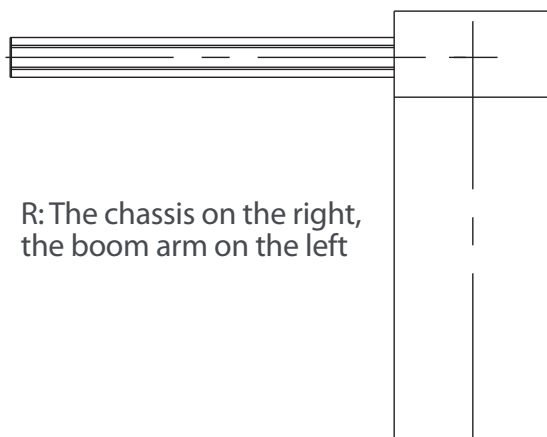
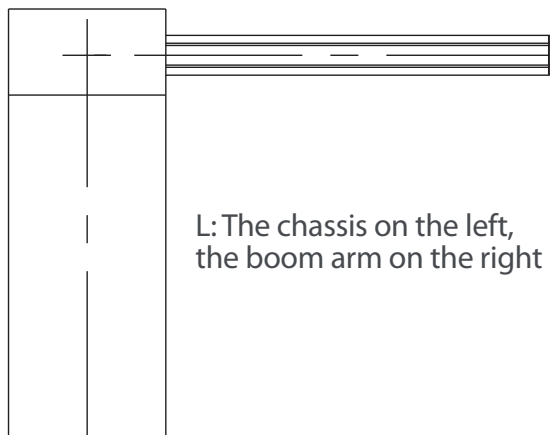
Features

- The fastest operating speed is 1.5s, the speed can be adjusted according to different boom arm length.
- Digital control monitoring, support delay automatic close functions.
- High safety, support power off manually rise boom arm, anti - smash functions.
- The position of the angle of rise / fall can be adjusted, and the digital encoder is adopted to limit the position automatically, replacing the traditional limit structure, and the position control is accurate.
- The barrier boom will rebound when it is blocked.
- Invertibility left and right direction, simple and compact transmission mechanism, easy to install on site.

Specifications

Model	BG300
Operating Speed	1.5-6s
Boom Length	Max 6m
Boom Type	Telescopic straight boom
Chassis Dimension	1010*350*280mm
Weight	43KG
Motor Type	24V DC brushless motor
Output Power	160W
Output Current	10A
Working voltage	DC 24V
Power Supply	AC 220V/110V 50-60Hz
Operating Temperature	-30°C to 75°C
MCBF	2 million times
Remote Control Distance	≥30m

Directions



Dimension

